

BEYOND IMPACT VEGAN EIS AND SEIS FUND I

21.10.23

Don't invest unless you're prepared to lose all your money. This is a high-risk investment, and you are unlikely to be protected if something goes wrong.

Experienced fund consultant: Beyond Impact Advisors Sàrl (“we, our”) has been investing in the future of food & materials since 2017, seed financing several plant-based and materials tech companies. Our investment portfolio is close to 30 companies in pre-seed, seed, Series A and Series B rounds. We have made several early-stage investments in the UK - Wicked Kitchen, MIGHTY, Big Yard, Meatless Farm, and The Vurger Co – and have experience in launching climate finance funds.

Impact: Our impact comes from investing in scalable, and sustainable solutions that transition away from the use of animals. This shift can reduce GHG emissions, land usage, water usage, waste generation, pollution and improve societal factors like health and working conditions. For example, we have invested in companies that use tree-based raw materials like cashew and jack fruit, algae-derived ingredients, and food waste up-cycling, which can save on resources and combat against the climate crisis. >

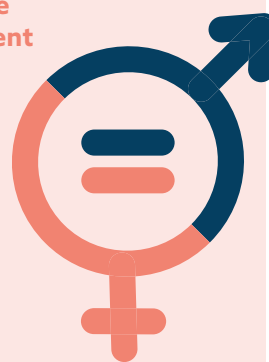
OUR IMPACT LENS

DIVERSITY: SEEKING TO HAVE GENDER AND ETHNIC DIVERSITY AT THE TEAM/FOUNDER LEVEL.

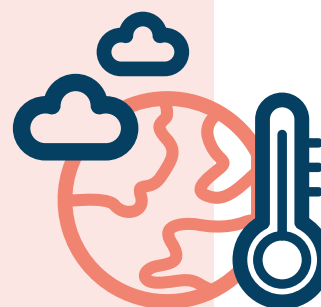
IMPACT FOCUS: ANIMAL-FREE ALTERNATIVES TO MEAT, DAIRY, EGGS & FISH

Sustainable Development Goals

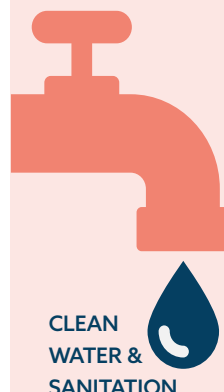
GENDER
EQUITY



LIFE BELOW
WATER



CLIMATE
ACTION



CLEAN
WATER &
SANITATION

LIFE
ON LAND



RESPONSIBLE
CONSUMPTION
& PRODUCTION



FACTS

FUND SUMMARY

RAISING A £10 MILLION FUND WITH A MINIMUM FUND SIZE OF £2 MILLION. THE COMPANIES THE FUND WILL INVEST IN WILL BE SEIS/EIS-QUALIFYING, BRINGING SIGNIFICANT TAX ADVANTAGES.



Tax treatment depends on the individual circumstances of each client and may be subject to change in the future.

< Team: We have highly experienced investment teams in the alternative protein & materials sector and we are one of the few global firms dedicated to this space. *Beyond Impact* actively supports and engages with portfolio companies by taking board seats, advisor roles and providing access to networks, assisting with fundraising, etc.

Investment strategy: The Fund's investment strategy is to select the best companies across four pillars:

- (a) Proteins derived from non-animal sources.
- (b) Cruelty-free products and animal testing alternatives.
- (c) Healthy plant based convenience foods and outlets.
- (d) Alternative materials and plant-based apparel.



Climate financing: The food and materials sector is a significant contributor to the climate crisis that has been frequently ignored by investors but has a huge potential for climate impact mitigation and adaptation, biodiversity preservation and protecting the oceans.

FIGURES

Fund Structure & Fees

CURRENCY	GBP (£)
FUND STRUCTURE	SEIS/EIS
INVESTMENT PERIOD	12 months
MINIMUM PORTFOLIO SIZE	Three companies
MINIMUM INVESTMENT	£25k
TARGET RETURNS	2.5X after seven years
TARGET FUND SIZE	£10M; minimum - £2M
FEES	Paid by the investee company - Establishment Fee of 5% and an Annual Management Charge of 2%. Paid by investor - Performance Fee - 20% of returns above 100% of amount invested in fund
TARGET INVESTMENT SIZE	Tickets between £100k and £1M

This document constitutes a financial promotion pursuant to section 21 of FSMA. Its contents have been approved for the purposes of section 21 of FSMA by Sapphire Capital Partners LLP, which is authorised and regulated by the Financial Conduct Authority in the United Kingdom and whose registered office is at 28 Deramore Park, Malone, Belfast BT9 5JU. This financial promotion has been approved by Sapphire Capital Partners LLP (FRN 565716) on 21st October 2023.

If you have any questions please contact: Invest@beyondimpact.vc

To invest in the fund please visit:

www.sapphirecapitalpartners.co.uk/beyond-impact-vegan-seis-and-eis-fund-i

